

F72
.C46J6

No. F 72. C 16. 16



GIVEN BY

Otto Fleishner

CAUTION

Do not write in this book
Pe... mark it
are
with
by the
of Mas-
83.



Souvenir of the Charles River

S. S. Jones

69-2

PRICE 25 CENTS

Braille text at the bottom of the page.

F73
C46J6

4351.158

Given to
Dec 3, 1927

Reputation Chocolates

Have the name



on every Chocolate

On sale at River Boat Houses

A trial will prove
their superior merit

LOVELL & COVEL

BOSTON

LOVELL & COVEL
BOSTON
MASS.

TO THE RIVER CHARLES

By HENRY WADSWORTH LONGFELLOW

*River! that in silence windest
Through the meadows, bright and free,
Till at length thy rest thou findest
In the bosom of the sea!*

*Four long years of mingled feeling,
Half in rest and half in strife,
I have seen thy waters stealing
Onward, like the stream of life.*

*Thou hast taught me, Silent River!
Many a lesson, deep and long;
Thou hast been a generous giver;
I can give thee but a song.*

*Oft in sadness and in illness
I have watched thy current glide,
Till the beauty of its stillness
Overflowed me, like a tide.*

*And in better hours and brighter,
When I saw thy waters gleam,
I have felt my heart beat lighter,
And leap onward with thy stream.*

*Nor for this alone I love thee,
Nor because thy waves of blue
From celestial seas above thee
Take their own celestial hue.*

*Where yon shadowy woodlands hide thee,
And thy waters disappear,
Friends I love have dwelt beside thee,
And have made thy margin dear.*

*More than this — thy name reminds me
Of three friends, all true and tried;
And that name, like magic, binds me
Closer, closer to thy side.*

*Friends my soul with joy remembers!
How like quivering flames they start,
When I fan the living embers
On the hearthstone of my heart!*

*'Tis for this, thou Silent River!
That my spirit leans to thee;
Thou hast been a generous giver,
Take this idle song from me.*

6962

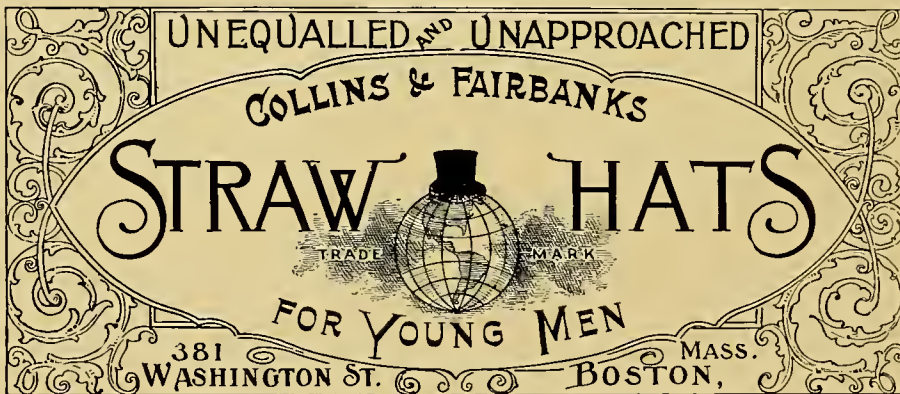
THE WALTHAM BOAT AND CANOE CO.

BUILDERS OF

THE ROBERTSON *and* PERRY CANOE

Awarded FIRST PRIZE at the Massachusetts Charitable Mechanics Association, 1896 ¶ *Our handsome New Model for 1904 is sure to attract attention* ¶ *We invite your inspection* ¶ *Write for descriptive circular* ¶ *Goods can be seen at our FACTORY, Woerd Avenue, WALTHAM, MASS.*

PADDLES FOR SALE, Wholesale and Retail. BOATS AND CANOES TO LET
 MAIL ORDERS RECEIVE CAREFUL ATTENTION
JAMES G. BURGIN, Proprietor



W. O. TUTTLE EXTRACT COMPANY

MANUFACTURERS OF

Tuttle's Concentrated Fruit Flavors

TUTTLE'S CHAMPAGNE MIST, CHAMPAGNE GINGER

CLARET PUNCH, ORA FRUIT PUNCH

13 FOSTER WHARF, BOSTON, MASSACHUSETTS

CANOEING ON THE CHARLES

WITHOUT doubt no other sport in New England has made the wonderful advances that have been made in canoeing, and nowhere in the world is the canoeing interest so great as on our own Charles River. Here ten years ago were to be found comparatively few canoes. Now within a distance of four miles there are nearly 5,000, while above the Falls, in the clubs and houses extending far above South Natick, may be found thousands more.

Most of the canoes on the river are home built, the product of one of several of the models made on the Charles, all of which have become famous in the canoeing world, as shown by orders coming from all parts of the country, and even from foreign lands.

One who has never seen canoeing on the river at its best, has little idea of the beauty and fascination of such a sight.

Imagine hundreds of beautifully shaded, graceful canoes, with their bright cushions and gay flags, in groups, couples, or singly, floating down stream, amid picturesque banks, beautiful groves, and green meadows, and you have a faint idea of the novel sight of canoeing on the Charles.

If you are fortunate enough to be canoeing at sunset—and the sunsets over the Weston hills are always beautiful when seen from the river—and to spend an evening on the river during a concert or an illumination, to see the canoes appearing one by one, tastily decorated with Japanese lanterns, to hear the sweet tones of a passing guitar or the strains of some glee club floating down stream, you can very easily imagine yourself in Fairyland.

A trip on the river for the first time is rarely forgotten, and, whether it be in the early morning, late afternoon, or an hour in the evening, no happier or contented parties of young people can be found, than those having spent some time with the river in its wanderings.

INDIAN GIRL CANVAS COVERED CANOE

The Most Popular Mould Ever
Built Over

LENGTHS, 15 TO 18 FEET

Grade A - - \$40.00 to \$44.00

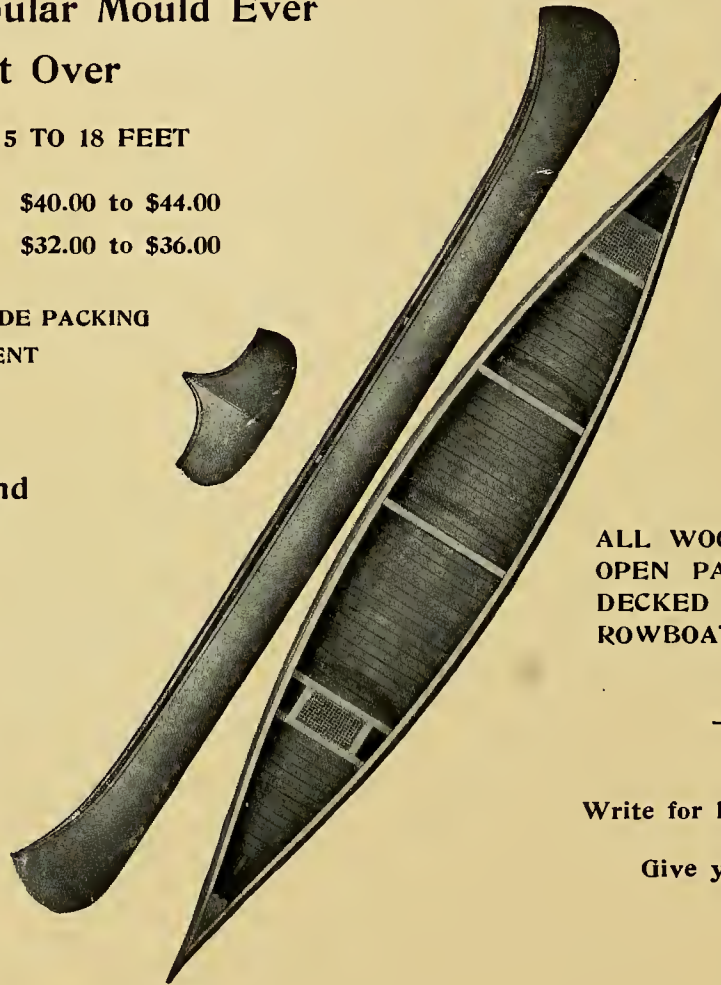
Grade B - - \$32.00 to \$36.00

THESE PRICES INCLUDE PACKING
FOR SHIPMENT

Also

INDIANS and
BIG CHIEF

Models



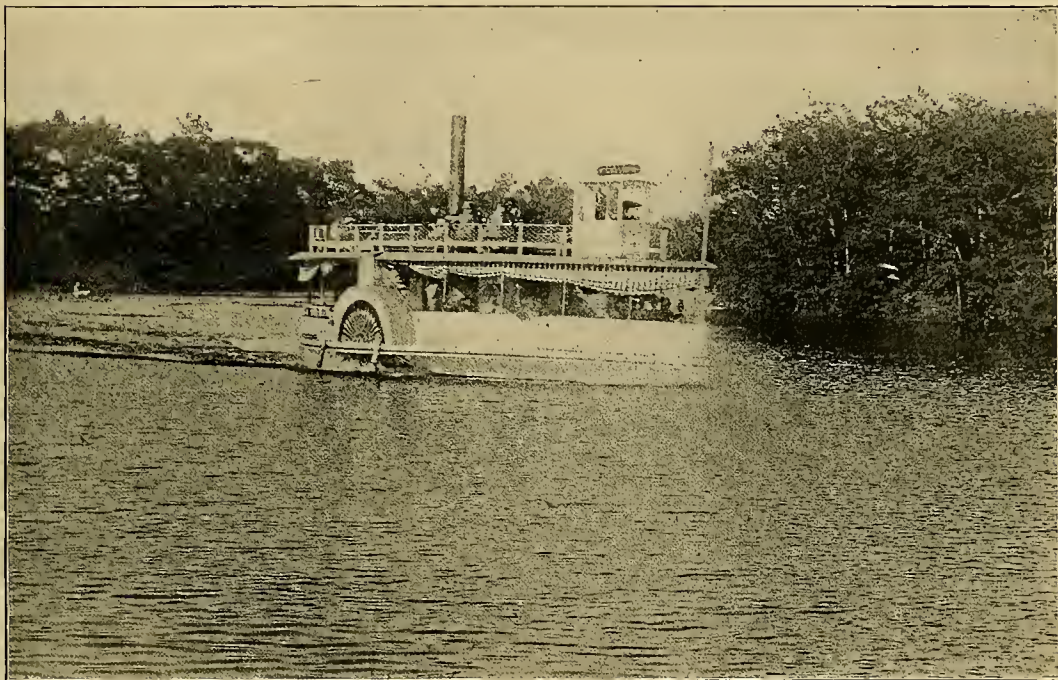
ALL WOOD CANOES,
OPEN PADDLERS,
DECKED SAILING CANOES,
ROWBOATS, ETC., ETC.

Write for Illustrated Catalogue

Give your full address

J. H. RUSHTON

821 WATER STREET, = = CANTON, N. Y.



THE WHITE SWAN.

THE above picture of the White Swan, taken from the only known photograph now in existence, shows the first steamer on the Charles above Waltham. The White Swan had a carrying capacity of 125, and twenty years ago ran between Waltham and Lily Point, then the most famous picnic ground in the county.

When the Prospect Street bridge was built, in 1889, she was unable to clear the arches, and so was obliged to give up her trips, which she had been making for over fifteen years. She was broken up and sold. Her engines are now doing good service in an ice-house in one of Waltham's suburbs.

COMPLIMENTS OF

American Waltham Watch Co.

THE

Heinz River Luncheon

MAKES A

DAINTY REPASTSome of **The 57**

Heinz Tomato Soup

Heinz Baked Beans

Heinz Sweet and Sour Pickles

Heinz Preserved Fruits

LUNCHEONS PUT UP AT THE OFFICE OF

The Weston Country Club

PUREOXIA
 DRY
 GINGER ALE



NORUMBEGA TOWER

This tower is built on the site of the Old Fort of Norumbega. Set up in 1889

PUZZLE: *Find the five canoeists*



The Smith Premier Typewriter Company

183 DEVONSHIRE STREET, BOSTON

WM. J. FLANAGAN & CO.

..MEN'S OUTFITTERS..

Formerly of F. W. B. SELLORS & CO.

290 Washington Street . . BOSTON, MASS.

Old South Building, Opp. School Street.

Telephone, 4693 Main.



WE wish to announce the arrival of our SPRING and SUMMER LINE, embracing the very newest things in Negligé Shirts, Neckwear, Hosiery, Gloves, Waistcoats, Underwear, Walking Sticks, and Umbrellas.

We desire to call particular attention to our line of 50-Cent Neckwear. No house in Boston shows a larger or more carefully selected line; no matter what you have paid they are worthy of your inspection.

WM. J. FLANAGAN & CO.

Men's Outfitters.

Old South Building.

For those
who discriminate

The
Apollo

"The Chocolates
that are different."

F. H. Roberts Co.
Boston



Photo by Brydson

STONY BROOK (*Lovers' Lane*)

This brook was first named Master's Brook, in 1631, by Governor Winthrop and party, who explored this part of the Charles River in January of that year.

REGALS FOR SUMMER WEAR

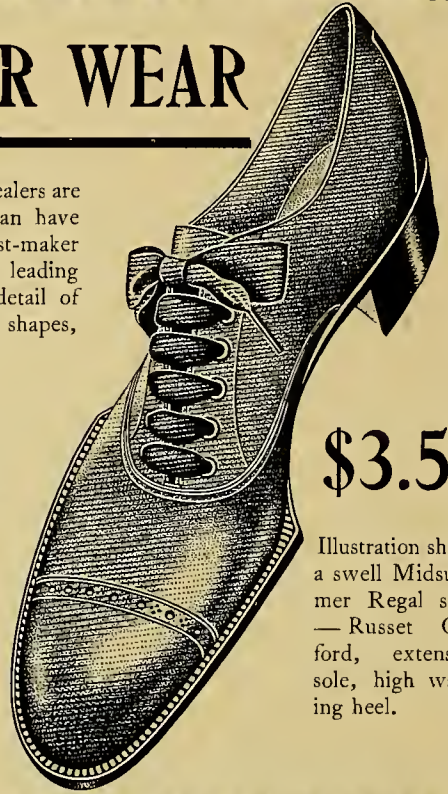
JUST now, in the good old summer time, when other dealers are offering you left-over shoes from last spring, you can have *Midsummer Regals* — designed by our expert last-maker right from the high-priced creations of New York's leading custom boot-makers. These new REGALS have every detail of latest style — Oxfords in all leathers and all correct shapes, and of the proper weight for comfort in hot weather. Incidentally, they add a lot to the delights of canoeing.

Regals for Men and Women

At six conveniently located stores in Boston you can procure these unexcelled Summer Regals for men and women — always at \$3.50 per pair.

113 Summer St. 109 Summer St. 248 Washington St.
71 Devonshire St. 169 Tremont St. 77 Mason St.

Regal Shoe Company, Inc.



\$3.50

Illustration shows a swell Midsummer Regal style — Russet Oxford, extension sole, high walking heel.

We are handy to the train, also in putting up Dainty River Lunches

Telephone
to

Stubenrauch's

181 and 183
Summer Street
Boston

EDWARD B. TOWNSEND

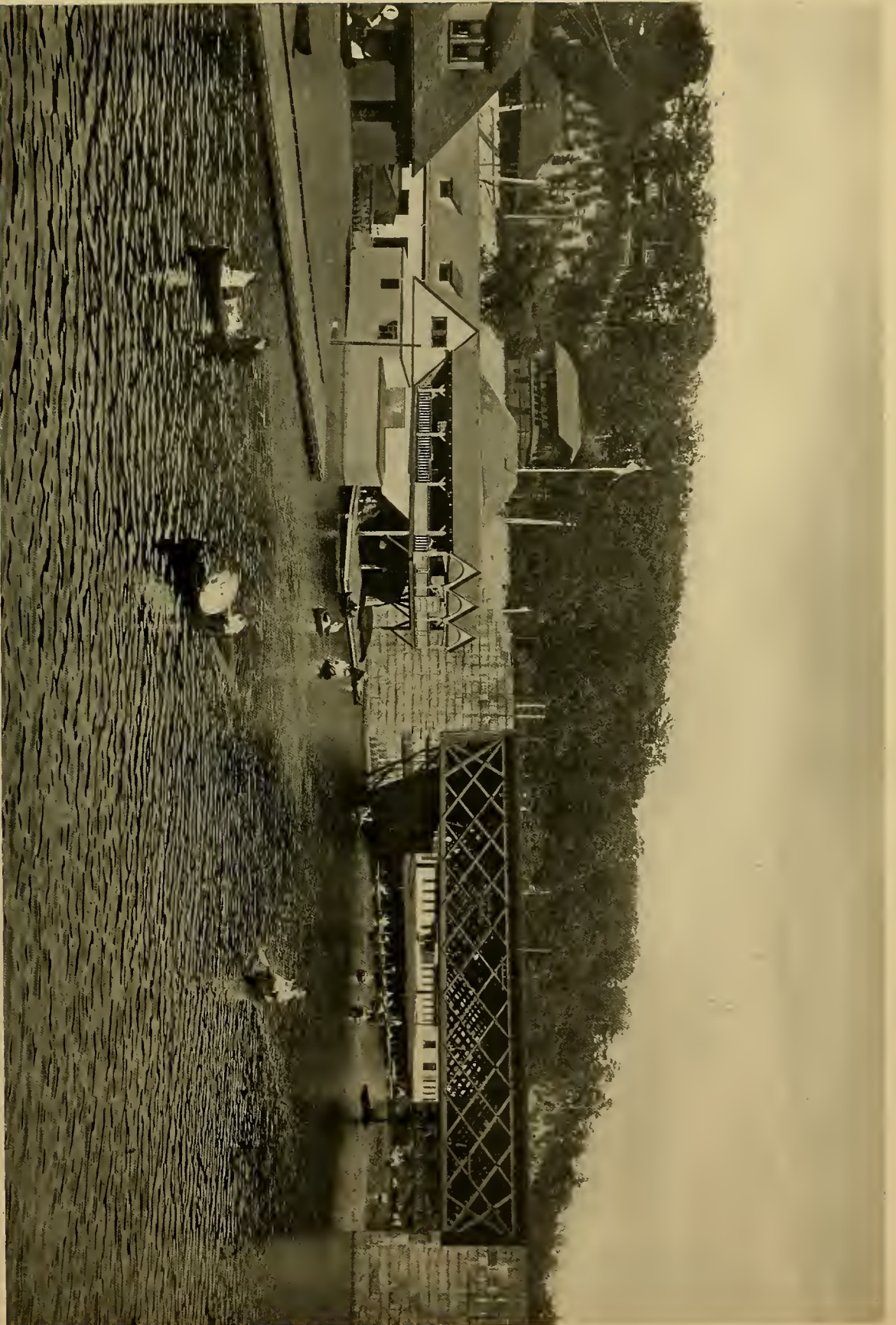
Anthracite
Bituminous

COAL

All Rail and Water Shipments

27 Kilby St., Boston, Mass.

Agent — New Central Coal Company of
Maryland, Georges Creek Cumberland Coal.



PUBLIC BOAT HOUSES AT RIVERSIDE
Showing Riverside Station and R. R. Bridge

Caracas Sweet Chocolate



TRADE MARK

MADE BY THE WORLD-
FAMOUS HOUSE OF

WALTER BAKER & CO. Ltd.

On an outing you cannot take any article of food in small compass so wholesome, sustaining, and delicious

WALTER BAKER & CO. Ltd.

Established 1780

DORCHESTER, MASS.

41 HIGHEST AWARDS IN EUROPE AND AMERICA

HORACE PARTRIDGE & CO.

BOSTON

**Athletic
Supplies**

OF EVERY DESCRIPTION

BASEBALL, TRACK, AND LAWN TENNIS
GOODS A SPECIALTY

Club and Association Members
afforded a SPECIAL DISCOUNT

Send for Illustrated Catalogue free

HORACE PARTRIDGE & CO.

84 Franklin Street

Flowers

WEDDINGS AND
GRADUATIONS
LATEST EFFECTS



J. Newman & Sons, Corp'n

51 Tremont Street



THE POLICE LAUNCH



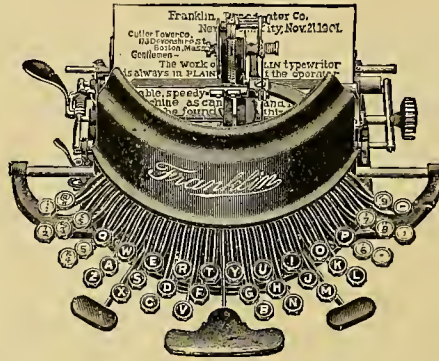
Sometimes it seems to me I must
Just quit the city's din and dust,
And get out where the sky is blue,
And say, now, how does it seem to you?
—Eugene Field

Franklin Typewriter

RELIABLE SIMPLE DURABLE

A HIGH GRADE MACHINE
CONTAINING ALL THAT
IS GOOD IN TYPEWRITER
CONSTRUCTION. WORK
ALWAYS IN SIGHT

CATALOGUES



P R I C E

\$75.00

CUTTER, TOWER COMPANY

234, 236, 238 Devonshire Street (Winthrop Square), Boston

C. F. EDDY CO.

ARE NOW DISCHARGING
A VERY NICE LOT OF

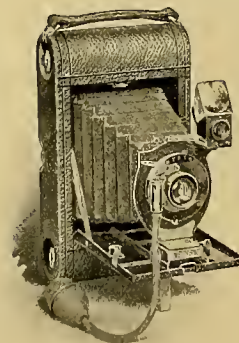
COAL

FREE, HARD, and LEHIGH
WE THINK COAL IS NOW
THE LOWEST, and would be
pleased to FILL YOUR BINS

J. B. Hunter & Co.

High Grade Fishing Tackle
Everything in Anglers' Supplies

Vacation Outfits at Low Prices



CAMERAS & CAMERA SUPPLIES

Special attention giving to Devel-
oping, Printing, and Enlarging

Golf and Tennis Goods

Pneumatic Air Cushions for Canoes
and Canoe Paddles

60 SUMMER STREET, BOSTON



LOOKING DOWN RIVER FROM THE B. A. A. BRIDGE

*Among the newest, purest
and best of Confections,
you will find the*

CHOCOLATES

Made by



Fuller
Greene
Co.

Factory:

31-32 Lewis Wharf
BOSTON, MASS.

DAME, STODDARD & CO.

DEALERS IN

Photographic Materials

FOR AMATEUR USE

CAMERAS

KODAKS — Poco, Century, Hawkeye — Film
Packs — Film, Plates, Papers, Developers, and
Sundries — Developing and Printing

374 WASHINGTON ST., BOSTON

OPP. BROMFIELD ST.

SHOES SUITABLE FOR OUTING PURPOSES



FOR MEN

WOMEN

AND CHILDREN

FINE MEATS AND POULTRY

FOR

FAMILY AND CLUB TRADE

V. A. PLUTA

AUBURNDALE, MASS.

Approximate Distances on Charles River.

	Miles		Miles
Source in Hopkinton	0.00	So. Natick Bridge, Pleasant Street	43.68
Willow Dam, Hayden Row	0.88	Waban Brook	45.40
Outlet, Echo Lake	1.95	Charles River Street Bridge	46.72
Hopkinton—Milford Boundary	2.28	Central Avenue Bridge	49.47
Cheney Pond Outlet	3.94	South Street, Charles River Village	50.40
Dilla Street	4.91	Chestnut Street, Day's Bridge	52.16
Main Street, Milford	6.29	Cor. Dover—Needham—Westwood	52.46
Howard Street	8.10	Cor. Dedham—Needham—Westwood	52.52
Milford—Hopedale Corner No. 1	8.26	Dedham Avenue—Needham Avenue	53.72
Mellen Street	9.24	Greendale Avenue	54.53
Bellingham—Hopedale—Milford Corner	9.26	Long (or Dedham) Ditch (head)	55.32
Bellingham—Hopedale—Mendon Corner	10.32	Entrance Job Island Pond	57.45
Hartford Avenue, Turnpike Street	10.33	Bridge Street	58.17
Bend in Stream S. of Point	11.69	Ames Street, Dedham Village	58.56
Burr's Dam	12.43	Mother Brook	58.86
Depot Street, Bellingham	12.63	Spring Street, West Roxbury	60.22
North Main Street, Bellingham	13.05	Line Ditch, Cor. Boston—Dedham—	
Norfolk Woolen Co. Dam	13.62	Needham	61.48
Holbrook Bridge	14.75	Kendrick Bridge, Nahaton Street	63.42
Maple Street, North Bellingham	17.11	Needham Street, or Highland Avenue	64.26
Pearl Street, Caryville	18.54	Eliot Street, Newton Upper Falls	65.20
Hopkins Brook (Cor. Bel.—Frank—Med)	19.12	Echo Bridge, Sudbury Aqueduct	65.37
Franklin Street	19.93	Boylston Street	65.50
West Medway Dam	20.40	Wales Bridge, Newton Lower Falls	67.25
Shaw Street, Elm Street	21.03	Washington Street, Newton Lower Falls	67.66
Sanford Street, Medway Village	22.64	County Rock, Cor. Newton—Wes.—Welles	68.32
Populatic Street	23.18	Concord Street	68.69
Outlet Populatic Pond	24.54	Long Bridge, L. F. Br. R. R.	69.23
Cor. Millis—Medway—Norfolk	24.93	Riverside Bridge, B. & A. R. R.	69.80
Partridge or Mill River	25.81	Starr Bridge, Auburndale	70.27
Deanville Bridge	25.94	Stony Brook, Cor. Newton—Wal.—Wes.	71.03
Millis—Norfolk, Cor. No. 4 Old R. R. Br.	26.08	Fox Island	71.03
Rockville Bridge	26.30	Prospect Street	72.83
Baltimore Bridge	27.28	Moody Street, Waltham	73.33
Cor. Medfield—Millis—Norfolk	28.00	Farwell Street	74.48
Forest Street	28.90	Bemis Bridge	75.39
Dwight Bridge	31.70	Watertown Dam, Head of Tidewater	76.33
Stop River	32.01	Galen Street, Watertown Bridge	76.51
Main Street, Millis and Medfield	32.96	N. Beacon—Market Street Bridge, Fanueil	78.01
Poor Farm Bridge	34.16	North Harvard, Brighton Street Bridge	80.79
Cor. Medfield—Millis—Sherborn	34.34	Cottage Farm Bridge	82.37
Dearth Bridge, Canal Street	37.10	Harvard Bridge, Massachusetts Avenue	83.39
Cor. Dover—Medfield—Sherborn	38.29	W. Boston Bridge	84.43
Dingle Hole Rocks	38.75	Charlestown Lower Bridge	85.50
Sherborn—Dover Bridge	39.89	Mouth of River, opp. South, Cor.	
Dover—Natick Corner	41.17	Navy Yard	85.76

DO IT NOW!

TRY



MADE BY

F. H. DOW & CO., BOSTON.



ONE OF THE MANY BEAUTIFUL PINE GROVES

When through the woods and fields I stray,
Where mingled lights and shadows play.

Tan Blucher *Outing Oxfords*

WITH RUBBER SOLE

\$3.50

COES & STODDER

Up Town Store
78 Boylston St.

Down Town Store
14 School St.

R. I. Connell

F. J. Jones

Connell & Jones

Men's Outfitters and Shirt Tailors

164 DEVONSHIRE STREET

19 FEDERAL STREET

Boston, Mass.

Telephone Connection

ABNER K. PRATT

ESTABLISHED 1798

J.L. Fairbanks & Co. Stationers

AND ACCOUNT BOOK
MANUFACTURERS

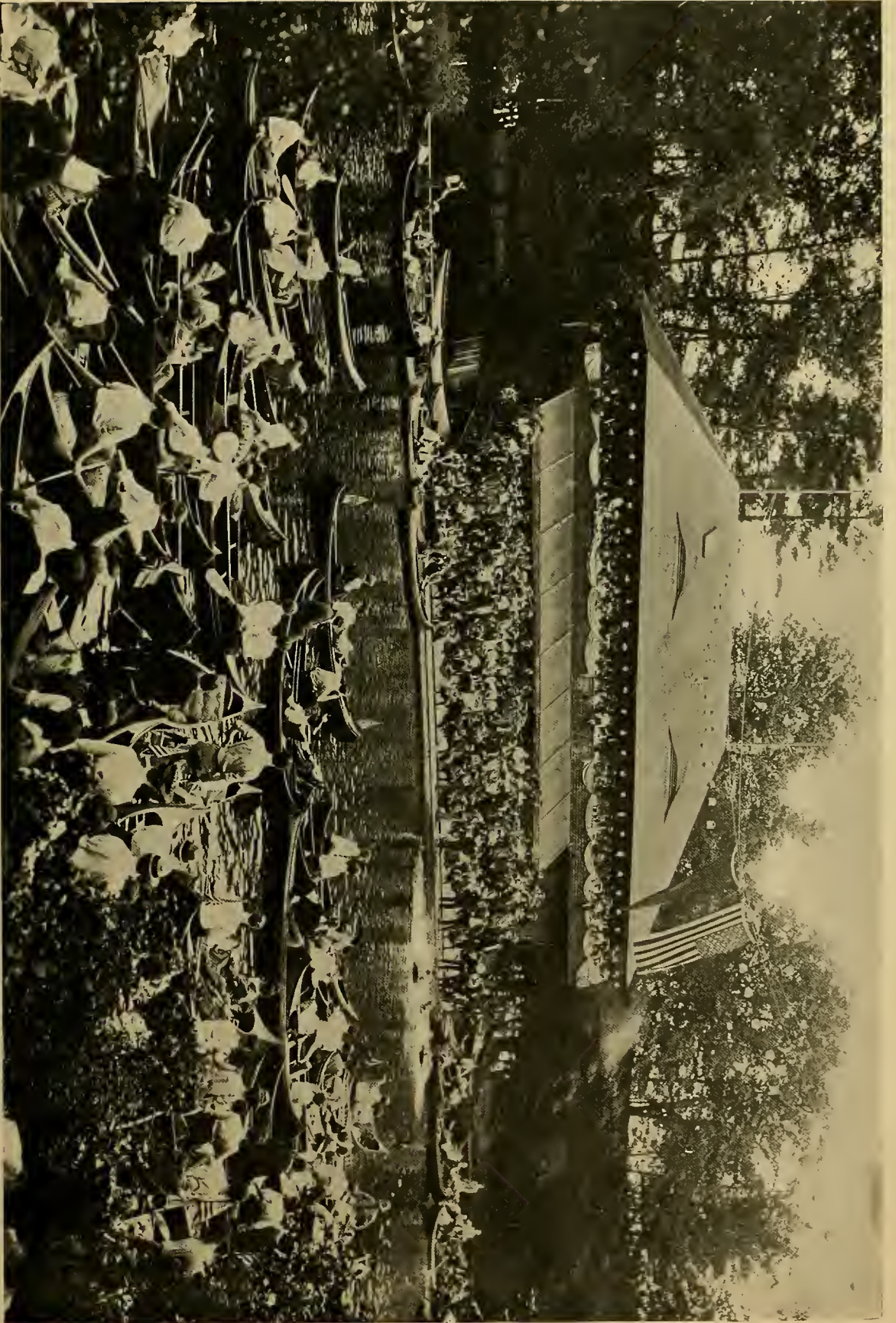
WEDDING ORDERS
AND DIE WORK
MONOGRAMS

15 Franklin Street
Boston

When in Boston
dine at

Crosby's

19 School Street



BOSTON ATHLETIC ASSOCIATION BOAT HOUSE

Scene at the Annual Field Day, Water Sports

NECCOS'

NECCOS'

LENOX CHOCOLATES (Light or Dark), in 1 lbs.,
1-2 lbs., or 10c. packages.

PEERLESS WAFERS, in 5 lb. Boxes, or 5c. packages.

VIOLET PASTILLES . . . 10c. and 5c. packages.

CARNATION PASTILLES . 10c. and 5c. packages.

CHOCOLATE MINTS, Wintergreen, 10c. packages.

NECCOS CHOCOLATE ALMONDS, 10c. packages.

NECCOS CHOCOLATE CREAMS . 5c. packages.

NECCOS CHOCOLATE MINTS . . 5c. packages.

NECCOS'

MADE BY

NEW ENGLAND CONFECTIONERY CO.

253 SUMMER STREET . . BOSTON, MASS.

T. J. SHAW & CO.
150 Commercial St., BOSTON.

Manufacturers of
**CANOE
PADDLES.**

Special Styles Made to Order, and of Fancy
Woods—Bird's-eye Maple, and Cherry.
OUR PRICES ARE RIGHT.

OARS
of every description.

J. B. SANDERSON
P R O P R I E T O R

**BARLOW'S
ICE CREAM**

Also, dealer in HEAVY CREAM from my
Vermont farms, at Wholesale and Retail.
Liberal discount to Clubs, Churches, Etc.

Cor. Watertown St. and Davis Ave.
WEST NEWTON, MASS.

Telephone 251-3.



Through woods and meads,
In shade and sun,



A PLEASANT DAY AT RIVERSIDE

Echo Bridge and Hemlock Gorge, the most beautiful spot on the river, is directly on the line of the

Boston & Worcester Trolley Air Line

DIRECT ROUTE TO ALL POINTS BETWEEN BOSTON AND WORCESTER

The most popular trolley trip in New England. Beautiful Scenery, Modern Equipment, Perfect Roadbed.
The Most Careful Attention given to the Safety and Comfort of Patrons.

FROM	TO	MILEAGE	FARE	Running Time	
				H.	M.
Park Square, Boston....	Newton Highlands	9 1-5	10c.		40
Park Square, Boston....	Wellesley Hills	11 1-2	10c.		50
Park Square, Boston....	North Natick or Felchville	16 1-5	15c.	1	00
Park Square, Boston....	Massachusetts State Militia Grounds	18 1-2	20c.	1	05
Park Square, Boston....	South Framingham.....	20 1-5	20c.	1	15
Park Square, Boston....	Framingham Centre	20	20c.	1	15
Park Square, Boston....	Southboro (White's Corner)	24	25c.	1	30
Park Square, Boston....	Marlboro	28	30c.	1	50
Park Square, Boston....	Hudson	32	35c.	2	15
Park Square, Boston....	Westboro and Northboro	29	30c.	1	45
Park Square, Boston....	Shrewsbury	35	40c.	2	00
Park Square, Boston....	Worcester.....	39 1-4	45c.	2	15



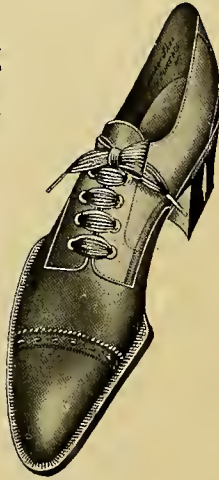
EASE and COMFORT for WOMEN

\$3.50

MEN'S

\$4.00

\$4.50



We make exclusive styles for Tennis, Camping, Outing, Dress, and Walking. Flat Lasts, Newest Shapes. Bluchers, and Button Oxfords, etc. Call and see them.

E. W. BURT & CO., Inc.
40 WEST STREET (Boston Store)

HEADQUARTERS FOR
RAZORS, SHEARS
HUNTING AND POCKET
KNIVES THAT CUT

FIRST-CLASS REPAIRING

M. OBERHAUSER

9 WATER STREET

12 SPRING LANE

Razors Honed

Shears Ground



Photo by Barton

ECHO BRIDGE

Famous for its wonderful echo. Spans the river between Newton Upper and Lower Falls. The echo, accidentally discovered, is lost when the water is entirely drawn from the river

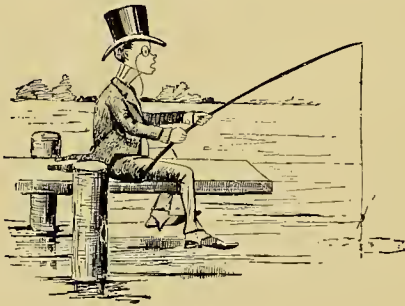
“Why Not Have The Best?”

TROWBRIDGE'S ORIGINAL CHOCOLATE CHIPS

Name on every Chip

SOLD BY
WESTON COUNTRY CLUB

IF YOU ARE GOING A-FISHING



call and look over our line of

FISHING TACKLE

Also Paddles, Flag Holders, Flags and Pennants, Locks, Rings, and other Canoe Accessories. Golf and Tennis Goods. Baseball Supplies.

PHOTOGRAPHIC OUTFITS

The Eastman line a specialty

Also everything in **HARDWARE and TOOLS**

Chandler & Barber

124 Summer Street

BOSTON



FRANCIS PRATT, Jr.

P. O. BOX 2697

Cost More—

Try Them—

And See Why



THE RUSTIC BRIDGE AT HEMLOCK GORGE

Beside the hemlock bowered stream
How soon come dusk and dew and dream !
Through interwoven shine and shade
I hear a night bird's serenade ;
A note falls on a ripple's breast
So gently soothing it to rest ;
And lo, the Lady Moon in white
Draws back the curtain of the night,
And with a kiss awakes a star—
How still the stream and shadows are !

LOWNEY'S

"NAME ON EVERY PIECE"

Every Sealed Package of
Lowney's Chocolate Bon-bons
 is guaranteed to be fresh or money refunded. A guarantee slip is in each package of half-pound or more. The Purity and Delicious Quality of these Bon-bons have secured for them the largest sale of any confections in the world.
The Lowney Receipt Book sent FREE.
The WALTER M. LOWNEY COMPANY, Boston, Mass.



ABOVE RIVERSIDE

All green and fair the Summer lies,
Just boded from the bud of Spring,
With tender blue of wispid skies,
And winds which softly sing.
—*Stann Coulidge*

THE GINGER ALE
AND OTHER
SUMMER BEVERAGES

BOTTLED BY

The Standard Bottling and Extract Co.

ARE UNEQUALED

If you don't believe it

Ask **GUS**

**CANOE
 PENNANTS**

specially designed and made

U. S. FLAGS

for parade, piazza, or any purpose

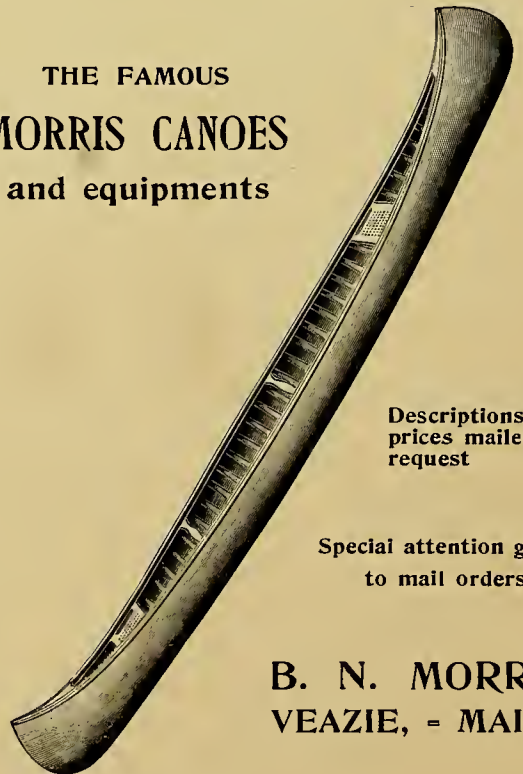
EMBLEMATIC JEWELRY

in Hat Pins, Brooches, Lapel Buttons, and Fobs

BENT & BUSH

15 School Street, - Boston

THE FAMOUS
MORRIS CANOES
 and equipments



Descriptions and
 prices mailed on
 request

Special attention given
 to mail orders

**B. N. MORRIS
 VEAZIE, - MAINE**



Photo by Brynton

A PRIZE WINNER



Photo by Bryxton

THE RAPIDS

Not real still stillness, but just the trees,
Low whispering, or the hum of bees,
Or brooks' faint babbling over stones
In strangely, softly tangled tones.

NORUMBEGA PARK

Auburndale-on-the-Charles @ The Famous Resort

BEST TROLLEY RIDE IN NEW ENGLAND
— OPENS DAILY AT TEN A.M. —

This Season of 1904 Grandest of All

MAGNIFICENT NEW OPEN-AIR THEATRE
NOTHING IN THE WORLD TO COMPARE OF ITS KIND
High-Class Vaudeville Performances 3-30 P.M. and 8.05 P.M.

Always something to see at the CHALET
with its Electrical Wonders, the Rifle
Range, and Electric Fountain



BOAT HOUSE—finest on Charles
River Everything for the comfort and
. convenience of patrons

ZOOLOGICAL GARDEN—LARGEST IN THE EAST

Restaurant has excellent Bill of Fare and Service

CARS FROM SUBWAY MARKED "NORUMBEGA PARK" COME DIRECT WITHOUT CHANGE

GEO. B. APPLETON

Importer and Dealer in

Fine Cutlery and Fishing Tackle

Table Cutlery, Pocket Knives
Scissors, Razors
Strops, Brushes, Thermometers

Sharpening and Repairing

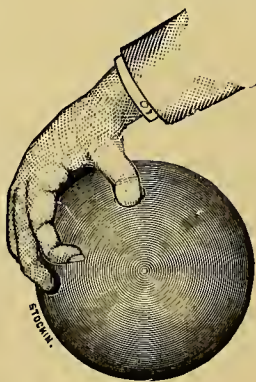
OLD SOUTH BUILDING
294 WASHINGTON STREET
Main Corridor, Street Floor

Entrances also at
10 MILK STREET and 7 SPRING LANE
Practically my old location

TELEPHONE, 4486-3 MAIN

WM. F. CHESTER

MANUFACTURER OF



REGULATION BOWLING BALLS

OLD BALLS RE-TURNED

TEN PINS

55 HAVERHILL ST.
cor. Travers St.
BOSTON





“MOUNTAIN SHEEP”

The largest buffalo in existence

Height, 2500 lbs.

One of the greatest attractions of Norumbega Park

TWO IS A COMPANY
THREE IS A CROWD
BUT A BOX OF



CHOCOLATES

IS ALWAYS ALLOWED

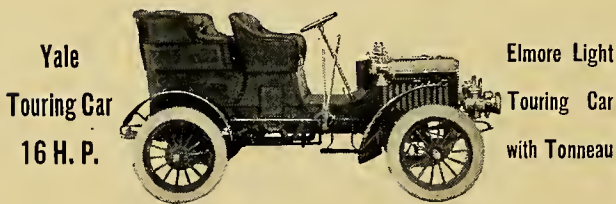
NO CANOEING PARTY IS COMPLETE WITHOUT THEM

H. N. FISH CHOCOLATE COMPANY

60 Commerce Street, Boston, Mass.

Automobiles

Bicycles Athletic Goods



Second-hand Autos. for sale

Storage Repairs Supplies

Tel. 479-6 Newton

Fred J. Read & Co.

Washington St. Newtonville **Open All Night** 41½ Columbus Ave. Boston

Canoeists, Attention!

Wellesley College	} One Canoe..... \$2.00
South Natick.....	
Charles River Village.....	
Sudbury Meadows	
Cheneys	
	} For each additional.... .75
Concord	} One Canoe..... \$4.00
Saxonville.....	
	} For each additional.... .75

Canoes delivered promptly and in good order

For prices to other points, apply or write to

CHAS. H. SHELNUT
Auburndale & Boston Express

Furniture and Piano Moving

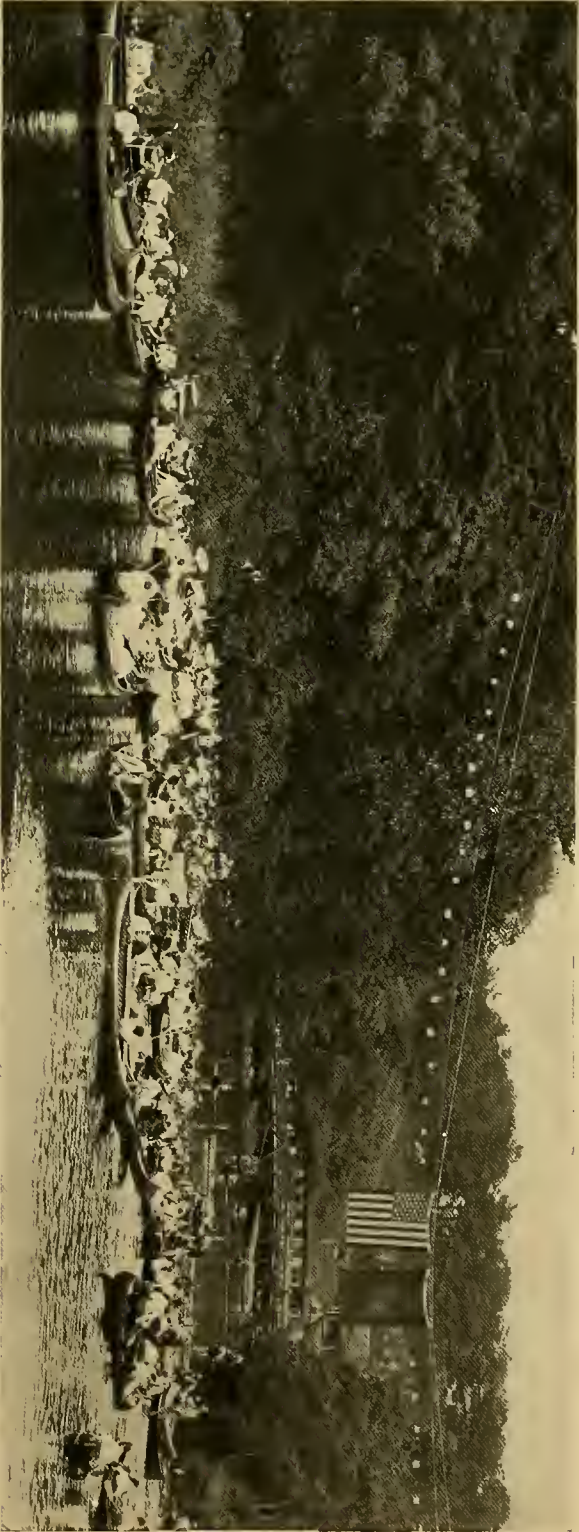
BOSTON OFFICES:

139 Kingston Street 67 Franklin Street 36 Merchants Row

AUBURNDALE OFFICE: 401 Auburn Street

TELEPHONE CONNECTION AT ALL TIMES

Also Canoes Packed for Shipment



TO MY CANOE

A fairer cove than I younger ever knew
Than thou, where in the night time or the day
I lazily deem leisure hours away
Or paddle slow the sapphire waters through.

A Proposal on the River

Buy a Box of



MADE BY

H. D. FOSS & CO., Incorporated

BOSTON, MASS.

The
Columbia Bathing Suit Co.
MANUFACTURERS OF
BATHING AND GYMNASIUM SUITS
BATHING SHOES AND CAPS

145 South St. BOSTON

Marshall Johnson & Son
24 FANEUIL HALL SQUARE
DEALERS IN ALL KINDS OF
FISH AND OYSTERS
Hotel, Club, and Restaurant
Trade Supplied

Telephone, 539 Main



THE WILLOWS

The lengthening shadows wait,
The first pale stars of twilight.

—Hobbes

Boating Shoes
 Tennis Shoes
 Golf Shoes
 Street Shoes
 Dress Shoes



435 WASHINGTON STREET
 (CORNER WINTER)
 BOSTON

How far have you walked?

AMERICAN PEDOMETERS Will Tell You

100-Mile Pedometer	\$1.50	Carried like a Watch, Regulates to step of wearer	10-Mile Pedometer	\$1.00
--------------------	--------	---	-------------------	--------

Numbers on dial represent miles. Hand points out number of miles walked. Case of handsome nickel. If you play golf, or hunt, walk for business or pleasure — in search of health, or for recreation, the Walking is **Made Doubly Interesting** by carrying a Pedometer. At your dealer, or by mail, on receipt of price. Fully guaranteed. Write for booklet.

THE AMERICAN PEDOMETER CO.,
 611 Malley Bldg., - New Haven, Conn.

Charles Lawrence Company

Commission Merchants

IMPORTERS and JOBBERS

FRUITS AND FANCY GROCERIES

LAWRENCE 103 CIGAR

103 Commercial St.

TELEPHONE RICHMOND 66

Boston, Mass.



THE FALLS ABOVE ECHO BRIDGE IN WINTER

Souvenirs mailed anywhere
on receipt of price, 25 cents

F. C. JONES
Mt. Ida, - Newton, Mass.



BOSTON PUBLIC LIBRARY



3 9999 03296 403 1

1928

Boston Public Library
Central Library, Copley Square

Division of
Reference and Research Services

The Date Due Card in the pocket indicates the date on or before which this book should be returned to the Library.

Please do not remove cards from this pocket.

